

# 462



**PN25**

## Valvole a sfera maschio/femmina con codolo a testa conica e O-ring Male/female ball valves with tail with conical head and O-ring



**NICHELATE  
ESTERNAMENTE**  
EXTERNALLY  
NICKEL-PLATED

 **ACQUA POTABILE**  
DRINKING WATER

**PASSAGGIO TOTALE**  
FULL BORE

Indicate in impianti di riscaldamento per le batterie di collettori. Per impianti idrotermosanitari, adatte al consumo di acqua potabile. Installazione in impianti di media pressione di riscaldamento industriale, civile, impianti pneumatici, per fluidi non aggressivi. Suitable for heating systems for manifolds batteries. For plumbing-heating systems and drinking water consumption. Installation in medium pressure industrial and civil heating systems, pneumatic systems and for non-aggressive fluids.

Pressione di esercizio: 25 bar

Temperatura di esercizio: -20°C +130°C (gelo escluso)

Filetti cilindrici secondo norma ISO 228-1

Tenuta sull'asta 1/2" - 1" asta assemblata dall'interno con 2 OR in EPDM PEROX

Tenuta sulla sfera con 2 sedi in PTFE

Passaggio totale

Working pressure: 25 bar

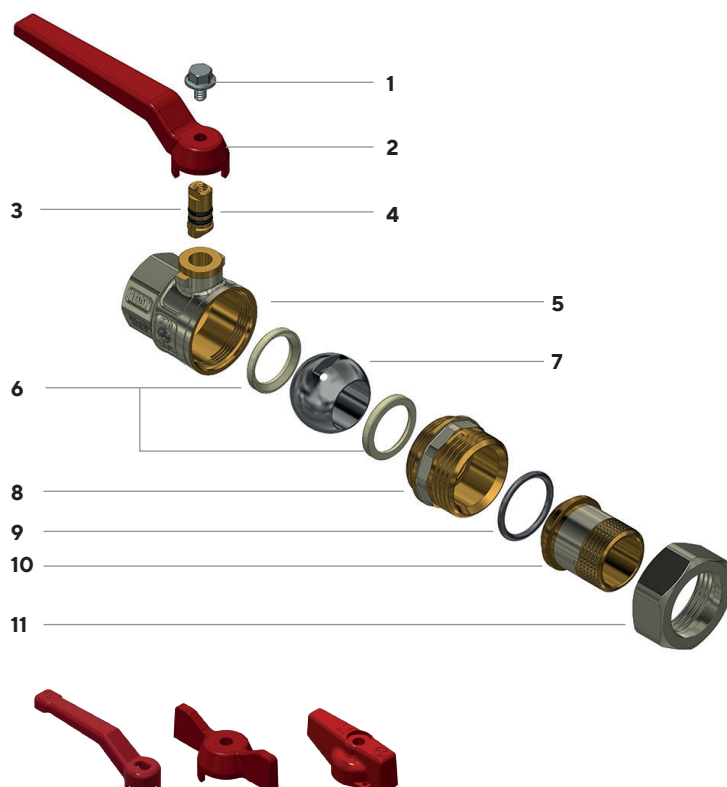
Working temperature: -20°C +130°C (no frost)

Cylindrical threads according to ISO 228-1

Seal on stem: 1/2" - 1" stem assembled from inside with 2 EPDM PEROX OR

Seal on the ball with 2 PTFE gaskets

Full bore



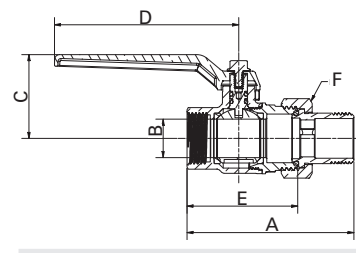
- 1 Vite in Fe-Zn/Bn
- 2 Leve disponibili: vedi tabelle seguenti
- 3 Asta in CW614N UNI EN 12165
- 4 O-ring in EPDM PEROX
- 5 Corpo valvola CW617N UNI EN 12165 nichelato sulla superficie esterna
- 6 Sede in PTFE
- 7 Sfera in CW617N UNI EN 12165 cromata
- 8 Manicotto in CW617N UNI EN 12165 nichelato sulla superficie esterna
- 9 O-ring in EPDM PEROX
- 10 Codolo in CW617N UNI EN 12165
- 11 Dado in CW617N UNI EN 12165



- 1 Fe-Zn/Bn screw
- 2 Available levers: see following tables
- 3 CW614N UNI EN 12164 stem
- 4 EPDM PEROX O-ring
- 5 CW617N UNI EN 12165 body, nickel-plated on the external surface
- 6 PTFE gasket
- 7 CW617N UNI EN 12165 chrome-plated ball
- 8 CW617N UNI EN 12165 end adaptor, nickel-plated on the external surface
- 9 EPDM PEROX O-ring
- 10 CW617N UNI EN 12165 tail
- 11 CW617N UNI EN 12165 nut





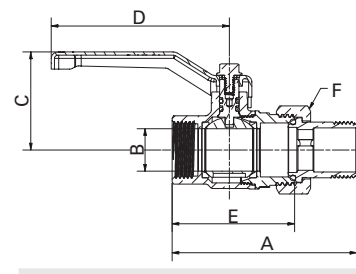
**Con leva in alluminio**  
With aluminium lever





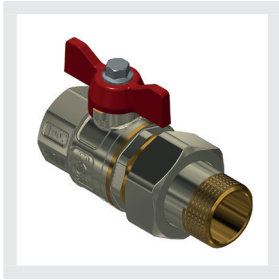
Attacchi Connections	Codice prodotto Product code		PN	A ±1mm	B mm	C mm	D mm	E mm	F mm	Conf. num. pezzi Pack. num. pieces
										
1/2"	462D1/2G5R	462D1/2G5B	25	76,5	15	40,5	95	51	30	8/96
3/4"	462E3/4G5R	462E3/4G5B	25	87	20	43,5	95	57	37	5/60
1"	462F001G5R	462F001G5B	25	102	25	59,5	115	68,5	46	2/24



**Con leva in acciaio imbutita**  
With drawn steel lever

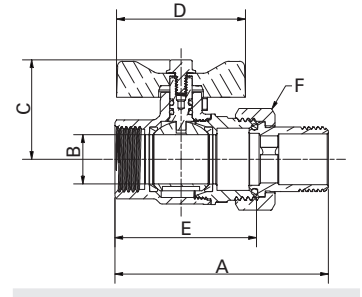



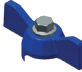
Attacchi Connections	Codice prodotto Product code		PN	A ±1mm	B mm	C mm	D mm	E mm	F mm	Conf. num. pezzi Pack. num. pieces
										
1/2"	462D1/2G1R	462D1/2G1B	25	76,5	15	42	83	51	30	8/96
3/4"	462E3/4G1R	462E3/4G1B	25	87	20	46,5	83	57	37	5/60
1"	462F001G1R	462F001G1B	25	102	25	66,5	90	68,5	46	2/24



**Con farfalla in alluminio "T"**  
With aluminium "T" handle

ACQUA POTABILE  
DRINKING WATER

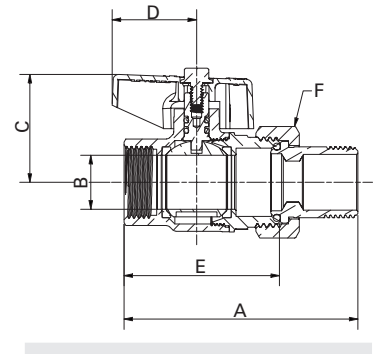




Attacchi Connections	Codice prodotto Product code		PN	A ±1mm	B mm	C mm	D mm	E mm	F mm	Conf. num. pezzi Pack. num. pieces
										
1/2"	462D1/2G6R	462D1/2G6B	25	76,5	15	36,5	52	51	30	8/96
3/4"	462E3/4G6R	462E3/4G6B	25	87	20	39,5	52	57	37	5/60
1"	462F001G6R	462F001G6B	25	102	25	50,5	65	68,5	46	3/36



**Con manopola in alluminio**  
With aluminium knob

ACQUA POTABILE  
DRINKING WATER



Attacchi Connections	Codice prodotto Product code		PN	A ±1mm	B mm	C mm	D mm	E mm	F mm	Conf. num. pezzi Pack. num. pieces
										
1/2"	462D1/2G2R	462D1/2G2B	25	76,5	15	37	31,5	51	30	8/96
3/4"	462E3/4G2R	462E3/4G2B	25	87	20	39	31,5	57	37	5/60
1"	462F001G2R	462F001G2B	25	102	25	54	42,5	68,5	46	3/36