

383

Valvole a sfera maschio/femmina Male/female ball valves

PN40

MADE IN ITALY



NICHELATE
NICKEL-PLATED

Installazione in impianti oleodinamici, riscaldamento e idrocarburi.
Installation in oleodynamic systems, heating systems and hydrocarbon.

Pressione di esercizio: vedi tabelle

Temperatura di esercizio: -20°C +150°C (in assenza di ghiaccio e vapore)

Filetti cilindrici secondo norma ISO 228-1 (corpo)

Filetto conico secondo norma EN 10226 - ISO7/1 - (manicotto)

Tenuta sull'asta: asta assemblata dall'interno con 2 OR in VITON

Tenuta sulla sfera con 2 sedi in PTFE

Passaggio totale

Working pressure: see tables

Working temperature: -20°C +150°C (no ice and steam)

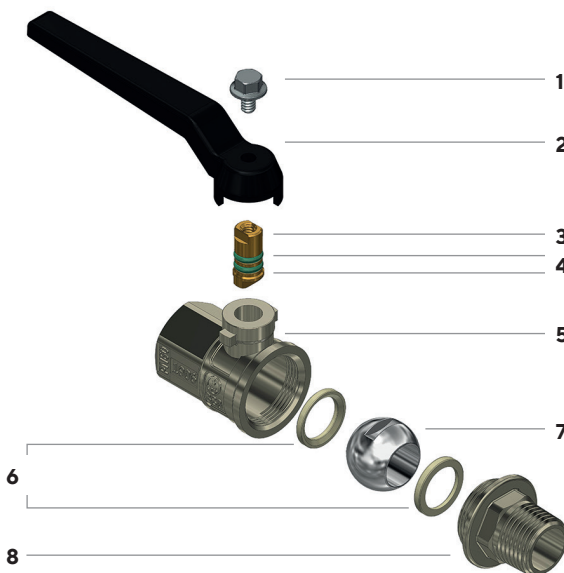
Cylindrical threads according to ISO 228-1 (body)

Conical threads according to EN 10226 - ISO7/1 (end adaptor)

Seal on the stem: stem assembled from inside with 2 VITON OR

Seal on the ball with 2 PTFE gaskets

Full bore



- 1 Vite in acciaio AISI 430
- 2 Leve disponibili: vedi tabelle seguenti
- 3 Asta in CW614N EN 12164
- 4 O-ring in VITON
- 5 Corpo valvola CW617N UNI EN 12165 nichelato
- 6 Sede in PTFE
- 7 Sfera in CW617N UNI EN 12165 cromata
- 8 Manicotto in CW617N EN 12165 nichelato

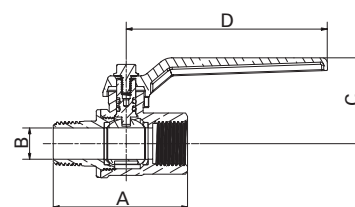
- 1 AISI 430 steel screw
- 2 Available levers: see following tables
- 3 CW614N UNI EN 12164 stem
- 4 VITON O-ring
- 5 CW617N UNI EN 12165 nickel-plated body valve
- 6 PTFE gasket
- 7 CW617N UNI EN 12165 chrome-plated ball
- 8 CW617N UNI EN 12165 nickel-plated end adaptor



VALVOLE A SFERA PER OLEODINAMICA E IDROCARBURI
OLEODYNAMIC AND HYDROCARBON BALL VALVES



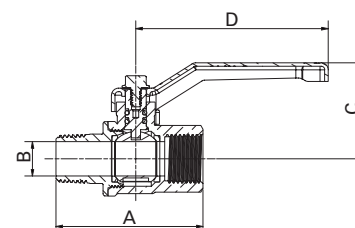
Con leva in alluminio
With aluminium lever



Attacchi Connections	Codice prodotto Product code	PN	A ±1mm	B mm	C mm	D mm	Conf. num. pezzi Pack. num. pieces
1/4"	383B1/4C5N	40	53,5	11	37,5	95	12/144
3/8"	383C3/8C5N	40	53,5	11	37,5	95	12/144
1/2"	383D1/2C5N	60	63,5	15	40,5	95	10/120
3/4"	383E3/4C5N	60	72,5	20	43,5	95	6/72
1"	383F001C5N	40	86	25	62	115	4/48
1" 1/4	383G11/4C5N	40	101,5	32	67,5	115	10
1" 1/2	383H11/2C5N	40	109,5	40	77	165	10
2"	383I002C5N	40	133,5	50	85	165	10



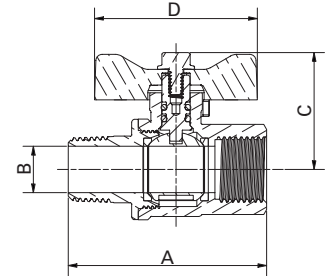
Con leva in acciaio imbutita
With drawn steel lever



Attacchi Connections	Codice prodotto Product code	PN	A ±1mm	B mm	C mm	D mm	Conf. num. pezzi Pack. num. pieces
1/4"	383B1/4C1N	40	53,5	11	40	83	12/144
3/8"	383C3/8C1N	40	53,5	11	40	83	12/144
1/2"	383D1/2C1N	60	63,5	15	42	83	10/120
3/4"	383E3/4C1N	60	72,5	20	45	83	6/72
1"	383F001C1N	40	86	25	68	90	4/48
1" 1/4	383G11/4C1N	40	101,5	32	73	90	10
1" 1/2	383H11/2C1N	40	109,5	40	79	160	10
2"	383I002C1N	40	133,5	50	90	160	10



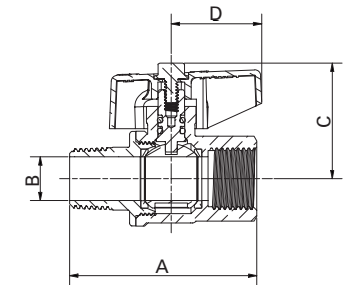
Con farfalla in alluminio "T"
With aluminium "T" handle



Attacchi Connections	Codice prodotto Product code	PN	A ±1mm	B mm	C mm	D mm	Conf. num. pezzi Pack. num. pieces
1/4"	383B1/4C6N	40	53,5	11	34	52	12/144
3/8"	383C3/8C6N	40	53,5	11	34	52	12/144
1/2"	383D1/2C6N	60	63,5	15	37	52	10/120
3/4"	383E3/4C6N	60	72,5	20	41	52	6/72
1"	383F001C6N	40	86	25	53,5	65	4/48



Con manopola in alluminio
With aluminium knob



Attacchi Connections	Codice prodotto Product code	PN	A ±1mm	B mm	C mm	D mm	Conf. num. pezzi Pack. num. pieces
1/4"	383B1/4C2N	40	53,5	11	35	31,5	12/144
3/8"	383C3/8C2N	40	53,5	11	35	31,5	12/144
1/2"	383D1/2C2N	60	63,5	15	37	31,5	10/120
3/4"	383E3/4C2N	60	72,5	20	41	31,5	6/72
1"	383F001C2N	40	86	25	54,5	42,5	4/48