

381

Valvole a sfera femmina/femmina Female/female ball valves

PN40

MADE IN ITALY



NICHELATE
NICKEL-PLATED

Installazione in impianti oleodinamici, riscaldamento e idrocarburi.
Installation in oleodynamic systems, heating systems and hydrocarbon.

Pressione di esercizio: vedi tabelle

Temperatura di esercizio: -20°C +150°C (in assenza di ghiaccio e vapore)

Filetti cilindrici secondo norma ISO 228-1

Tenuta sull'asta: asta assemblata dall'interno con 2 OR in VITON

Tenuta sulla sfera con 2 sedi in PTFE

Passaggio totale

Working pressure: see tables

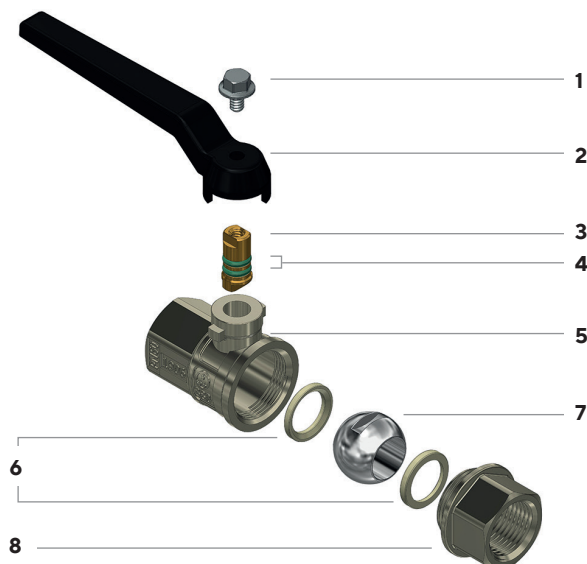
Working temperature: -20°C +150°C (no ice and steam)

Cylindrical threads according to ISO 228-1

Seal on the stem: stem assembled from inside with 2 VITON OR

Seal on the ball with 2 PTFE gaskets

Full bore



- 1 Vite in acciaio AISI 430
- 2 Leve disponibili: vedi tabelle seguenti
- 3 Asta in CW614N UNI EN 12164
- 4 O-ring in VITON
- 5 Corpo valvola CW617N UNI EN 12165 nichelato
- 6 Sede in PTFE
- 7 Sfera in CW617N UNI EN 12165 cromata
- 8 Manicotto in CW617N EN 12165 nichelato

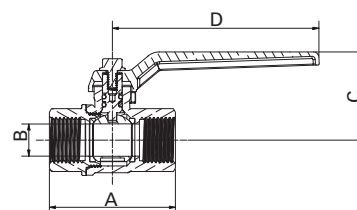
- 1 AISI 430 steel screw
- 2 Available levers: see following tables
- 3 CW614N UNI EN 12164 stem
- 4 VITON O-ring
- 5 CW617N UNI EN 12165 nickel-plated body valve
- 6 PTFE gasket
- 7 CW617N UNI EN 12165 chrome-plated ball
- 8 CW617N UNI EN 12165 nickel-plated end adaptor



VALVOLE A SFERA PER OLEODINAMICA E IDROCARBURI
OLEODYNAMIC AND HYDROCARBON BALL VALVES



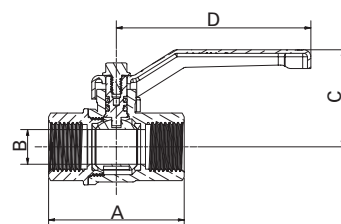
Con leva in alluminio
With aluminium lever



Attacchi Connections	Codice prodotto Product code	PN	A ±1mm	B mm	C mm	D mm	Conf. num. pezzi Pack. num. pieces
1/4"	381B1/4C5N	40	48	11	37,5	95	12/144
3/8"	381C3/8C5N	40	48	11	37,5	95	12/144
1/2"	381D1/2C5N	60	58	15	40,5	95	10/120
3/4"	381E3/4C5N	60	66	20	43,5	95	6/72
1"	381F001C5N	40	80	25	62	115	4/48
1" 1/4	381G11/4C5N	40	97	32	67,5	115	10
1" 1/2	381H11/2C5N	40	107	40	77	165	10
2"	381I002C5N	40	131	50	85	165	10



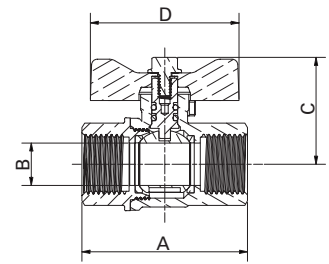
Con leva in acciaio imbutita
With drawn steel lever



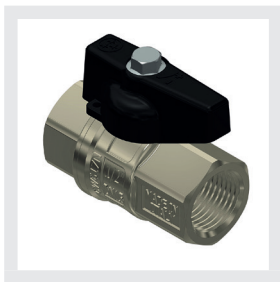
Attacchi Connections	Codice prodotto Product code	PN	A ±1mm	B mm	C mm	D mm	Conf. num. pezzi Pack. num. pieces
1/4"	381B1/4C1N	40	48	11	40	83	12/144
3/8"	381C3/8C1N	40	48	11	40	83	12/144
1/2"	381D1/2C1N	60	58	15	42	83	10/120
3/4"	381E3/4C1N	60	66	20	45	83	6/72
1"	381F001C1N	40	80	25	68	90	4/48
1" 1/4	381G11/4C1N	40	97	32	73	90	10
1" 1/2	381H11/2C1N	40	107	40	79	160	10
2"	381I002C1N	40	131	50	90	160	10



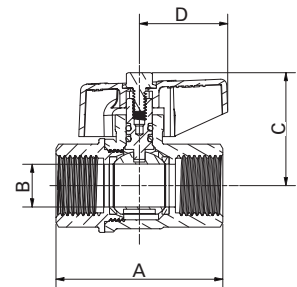
Con farfalla in alluminio "T"
With aluminium "T" handle



Attacchi Connections	Codice prodotto Product code	PN	A ±1mm	B mm	C mm	D mm	Conf. num. pezzi Pack. num. pieces
1/4"	381B1/4C6N	40	48	11	34	52	12/144
3/8"	381C3/8C6N	40	48	11	34	52	12/144
1/2"	381D1/2C6N	60	58	15	37	52	10/120
3/4"	381E3/4C6N	60	66	20	41	52	6/72
1"	381F001C6N	40	80	25	53,5	65	4/48



Con manopola in alluminio
With aluminium knob



Attacchi Connections	Codice prodotto Product code	PN	A ±1mm	B mm	C mm	D mm	Conf. num. pezzi Pack. num. pieces
1/4"	381B1/4C2N	40	48	11	35	31,5	12/144
3/8"	381C3/8C2N	40	48	11	35	31,5	12/144
1/2"	381D1/2C2N	60	58	15	37	31,5	10/120
3/4"	381E3/4C2N	60	66	20	41	31,5	6/72
1"	381F001C2N	40	80	25	54,5	42,5	4/48