

380W



PN40

Valvole a sfera femmina/femmina con sistema antilegionella e premi-stoppa in PTFE Female/female ball valves with anti-legionella system and PTFE seal

MADE IN ITALY



NICHELATE
ESTERNAMENTE
EXTERNALLY
NICKEL-PLATED

ACQUA POTABILE
DRINKING WATER

PASSAGGIO TOTALE
FULL BORE

Per impianti idrotermosanitari, adatte al trattamento di acque sanitarie potabili destinate al consumo umano. Omologate secondo la norma EN 13828 foglio di lavoro DVGW W570.

For plumbing and heating systems, suitable for the treatment of drinking water for human consumption. Approved according to standard EN 13828 worksheet DVGW W570.

Pressione di esercizio: vedi tabelle

Temperatura di esercizio: -30°C +150°C (gelo escluso)

Filetti cilindrici secondo norma ISO 228-1

Tenuta sull'asta:

- da 1/2" a 2" asta assemblata dall'interno con 1 OR in EPDM PEROX, premistoppa in PTFE, e regolabile con ghiera;
- 1/4" e 3/8" asta assemblata dall'esterno con premistoppa in PTFE e regolabile con ghiera.

Tenuta sulla sfera con 2 sedi in PTFE

Passaggio totale

Working pressure: see tables

Working temperature: -30°C +150°C (no frost)

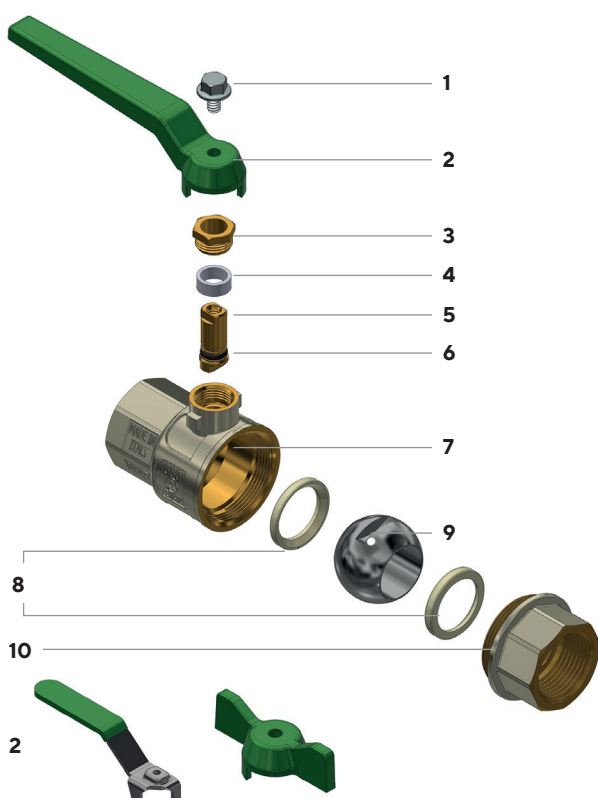
Cylindrical threads according to ISO 228-1

Seal on the stem:

- from 1/2" to 2" stem assembled from inside with 1 EPDM PEROX OR, PTFE seal and adjustable packing gland;
- 1/4" and 3/8" stem assembled from outside with PTFE gasket and adjustable packing gland;

Seal on the ball with 2 PTFE gaskets

Full bore

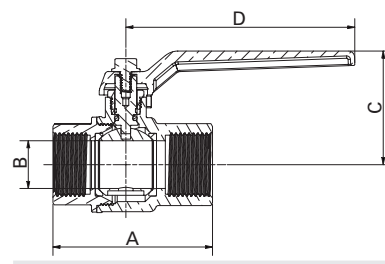


- 1 Vite in AISI 430
 - 2 Leve disponibili: vedi tabelle seguenti
 - 3 Ghiera in CW614N UNI EN 12164
 - 4 Anello premistoppa in PTFE
 - 5 Asta in CW614N UNI EN 12164
 - 6 O-ring in EPDM PEROX
 - 7 Corpo valvola in CW617N UNI EN 12165 nichelato sulla superficie esterna
 - 8 Sede di tenuta in PTFE
 - 9 Sfera cromata in CW617N UNI EN 12165
 - 10 Manicotto in CW617N UNI EN 12165
-
- 1 AISI 430 screw
 - 2 Available levers: see following tables
 - 3 CW614N UNI EN 12164 packing gland
 - 4 PTFE ring seal
 - 5 CW614N UNI EN 12164 stem
 - 6 EPDM PEROX O-ring
 - 7 CW617N UNI EN 12165 body valve, nickel-plated on the external surface
 - 8 PTFE gasket
 - 9 CW617N UNI EN 12165 chrome-plated ball
 - 10 CW617N UNI EN 12165 end adaptor, nickel-plated on the external surface





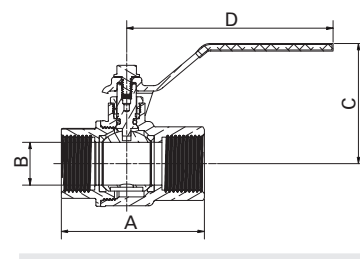
Con leva in alluminio
 With aluminium lever



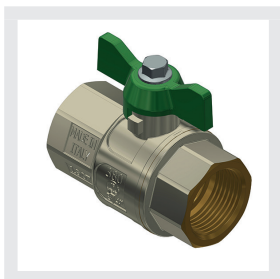
Attacchi Connections	Codice prodotto Product code	PN	A ±1mm	B mm	C mm	D mm	Conf. num. pezzi Pack. num. pieces
1/4"	380WB14G5V	40	48	11	41	95	12/144
3/8"	380WC38G5V	40	48	11	41	95	12/144
1/2"	380WD12G5V	60	58	15	43,5	95	10/120
3/4"	380WE34G5V	60	66	20	47	95	6/72
1"	380WF001G5V	40	80	25	62,5	115	4/48
1" 1/4	380WG114G5V	40	97	32	67,5	115	10
1" 1/2	380WH112G5V	40	107	40	80	165	10
2"	380WI002G5V	40	131	50	88	165	10



Con leva piatta in acciaio INOX AISI 304
 With AISI 304 stainless steel flat lever

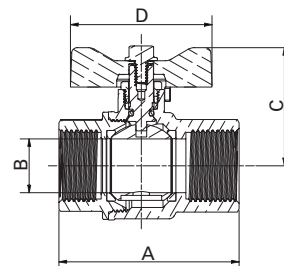


Attacchi Connections	Codice prodotto Product code	PN	A ±1mm	B mm	C mm	D mm	Conf. num. pezzi Pack. num. pieces
1/4"	380WB14G4V	40	48	11	41	95	12/144
3/8"	380WC38G4V	40	48	11	41	95	12/144
1/2"	380WD12G4V	60	58	15	43,5	95	10/120
3/4"	380WE34G4V	60	66	20	47	95	6/72
1"	380WF001G4V	40	80	25	60,5	115	4/48
1" 1/4	380WG114G4V	40	97	32	65,5	115	10
1" 1/2	380WH112G4V	40	107	40	77,5	165	10
2"	380WI002G4V	40	131	50	85,5	165	10



Con farfalla in alluminio "T"
With aluminium "T" handle

ACQUA POTABILE
DRINKING WATER



Attacchi Connections	Codice prodotto Product code	PN	A ±1mm	B mm	C mm	D mm	Conf. num. pezzi Pack. num. pieces
1/4"	380WB14G6V	40	48	11	37,5	52	12/144
3/8"	380WC38G6V	40	48	11	37,5	52	12/144
1/2"	380WD12G6V	60	58	15	39,5	52	10/120
3/4"	380WE34G6V	60	66	20	43,5	52	6/72
1"	380WF001G6V	40	80	25	51,5	65	4/48