

380



Valvole a sfera femmina/femmina con premi-stoppa in PTFE

Female/female ball valves with PTFE seal



PASSAGGIO TOTALE
FULL BORE

Per impianti idrotermosanitari, adatte anche al consumo di acqua potabile. Installazione in impianti di media ed alta pressione di distribuzione acqua, riscaldamento industriale, civile, impianti pneumatici, per fluidi non aggressivi.

For plumbing and heating systems, drinking water consumption. Installation in medium and high pressure industrial and civil heating systems, pneumatic systems and for non-aggressive fluids.

PN40

MADE IN ITALY



NICHELATE ESTERNAMENTE
EXTERNALLY NICKEL-PLATED



NICHELATE
NICKEL-PLATED

Pressione di esercizio: vedi tabelle

Temperatura di esercizio: -30°C +150°C (gelo escluso)

Filetti cilindrici secondo norma ISO 228-1

Tenuta sull'asta:

- da 1/2" a 3" asta assemblata dall'interno con 1 OR in EPDM PEROX, premistoppa in PTFE, e regolabile con ghiera;
- 1/8", 1/4", 3/8" e 4" asta assemblata dall'esterno con premistoppa in PTFE e regolabile con ghiera.

Tenuta sulla sfera con 2 sedi in PTFE

Passaggio totale

Working pressure: see tables

Working temperature: -30°C +150°C (no frost)

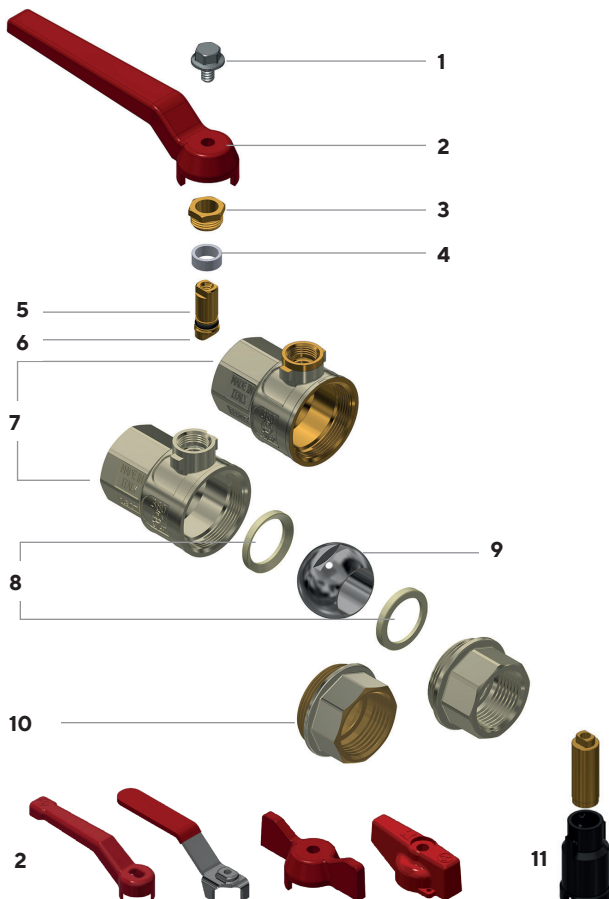
Cylindrical threads according to ISO 228-1

Seal on the stem:

- from 1/2" to 3" stem assembled from inside with 1 EPDM PEROX OR, PTFE seal and adjustable packing gland;
- 1/4", 3/8" and 4" stem assembled from outside with PTFE seal and adjustable packing gland;

Seal on the ball with 2 PTFE gaskets

Full bore



- 1 Vite in acciaio AISI 430
- 2 Leve disponibili: vedi tabelle seguenti
- 3 Ghiera in CW614N UNI EN 12164
- 4 Anello premistoppa in PTFE
- 5 Asta in CW614N UNI EN 12164
- 6 O-ring in EPDM PEROX
- 7 Corpo valvola CW617N UNI EN 12165 nichelato o nichelato solo sulla superficie esterna a seconda del modello (vedi tabelle)
- 8 Sede in PTFE
- 9 Sfera in CW617N UNI EN 12165 cromata
- 10 Manicotto in CW617N UNI EN 12165 nichelato o nichelato solo sulla superficie esterna a seconda del modello (vedi tabelle)
- 11 Per versioni 1/2" e 3/4" canotto prolunga in plastica PA6 caricata 50% fibra di vetro, per versioni da 1" a 2" in CW617N UNI EN 12165 nichelato

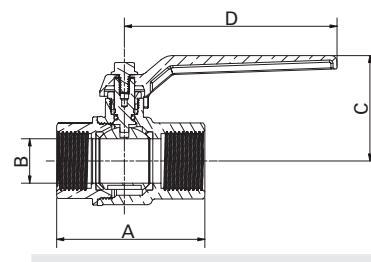
- 1 AISI 430 steel screw
- 2 Available levers: see following tables
- 3 CW614N UNI EN 12164 packing gland
- 4 PTFE ring seal
- 5 CW614N UNI EN 12164 stem
- 6 EPDM PEROX O-ring
- 7 CW617N UNI EN 12165 body valve, nickel-plated or nickel-plated on the external surface
- 8 PTFE gasket
- 9 CW617N UNI EN 12165 chrome-plated ball
- 10 CW617N UNI EN 12165 end adaptor, nickel-plated or nickel-plated on the external surface
- 11 For 1/2" and 3/4" versions extension made of plastic sleeve PA6 loaded 50% glass fibre, for 1" to 2" versions of nickel-plated CW617N UNI EN 12165





Con leva in alluminio
With aluminium lever

NICHELATE ESTERNAMENTE
EXTERNALLY NICKEL-PLATED

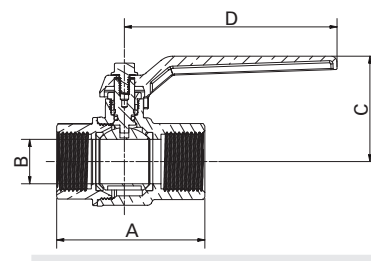
 **ACQUA POTABILE**
DRINKING WATER





| Attacchi Connections | Codice prodotto Product code | | PN | A ±1mm | B mm | C mm | D mm | Conf. num. pezzi Pack. num. pieces |
|-------------------------|---|---|----|-----------|---------|---------|---------|---------------------------------------|
| |  |  | | | | | | |
| 1/8" | 380A1/8G5R | 380A1/8G5B | 40 | 48 | 11 | 41 | 95 | 12/144 |
| 1/4" | 380B1/4G5R | 380B1/4G5B | 40 | 48 | 11 | 41 | 95 | 12/144 |
| 3/8" | 380C3/8G5R | 380C3/8G5B | 40 | 48 | 11 | 41 | 95 | 12/144 |
| 1/2" | 380D1/2G5R | 380D1/2G5B | 60 | 58 | 15 | 43,5 | 95 | 10/120 |
| 3/4" | 380E3/4G5R | 380E3/4G5B | 60 | 66 | 20 | 47 | 95 | 6/72 |
| 1" | 380F001G5R | 380F001G5B | 40 | 80 | 25 | 62,5 | 115 | 4/48 |
| 1" 1/4 | 380G11/4G5R | 380G11/4G5B | 40 | 97 | 32 | 67,5 | 115 | 10 |
| 1" 1/2 | 380H11/2G5R | 380H11/2G5B | 40 | 107 | 40 | 80 | 165 | 10 |
| 2" | 380I002G5R | 380I002G5B | 40 | 131 | 50 | 88 | 165 | 10 |



NICHELATE
NICKEL-PLATED



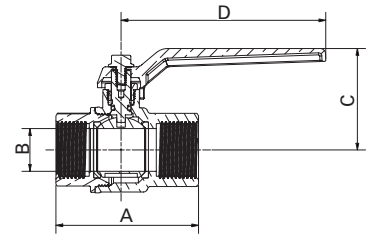
| Attacchi Connections | Codice prodotto Product code | | PN | A ±1mm | B mm | C mm | D mm | Conf. num. pezzi Pack. num. pieces |
|-------------------------|---|---|----|-----------|---------|---------|---------|---------------------------------------|
| |  |  | | | | | | |
| 1/8" | 380A1/8C5R | 380A1/8C5B | 40 | 48 | 11 | 41 | 95 | 12/144 |
| 1/4" | 380B1/4C5R | 380B1/4C5B | 40 | 48 | 11 | 41 | 95 | 12/144 |
| 3/8" | 380C3/8C5R | 380C3/8C5B | 40 | 48 | 11 | 41 | 95 | 12/144 |
| 1/2" | 380D1/2C5R | 380D1/2C5B | 60 | 58 | 15 | 43,5 | 95 | 10/120 |
| 3/4" | 380E3/4C5R | 380E3/4C5B | 60 | 66 | 20 | 47 | 95 | 6/72 |
| 1" | 380F001C5R | 380F001C5B | 40 | 80 | 25 | 62,5 | 115 | 4/48 |
| 1" 1/4 | 380G11/4C5R | 380G11/4C5B | 40 | 97 | 32 | 67,5 | 115 | 10 |
| 1" 1/2 | 380H11/2C5R | 380H11/2C5B | 40 | 107 | 40 | 80 | 165 | 10 |
| 2" | 380I002C5R | 380I002C5B | 40 | 131 | 50 | 88 | 165 | 10 |





Con leva in acciaio imbutita With drawn steel lever

NICHELATE ESTERNAMENTE
EXTERNALLY NICKEL-PLATED

 **ACQUA POTABILE**
DRINKING WATER

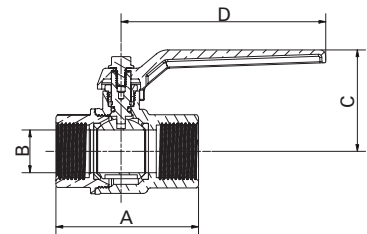




| Attacchi Connections | Codice prodotto Product code | | PN | A ±1mm | B mm | C mm | D mm | Conf. num. pezzi Pack. num. pieces |
|-------------------------|---|---|----|-----------|---------|---------|---------|---------------------------------------|
| |  |  | | | | | | |
| 1/8" | 380A1/8G1R | 380A1/8G1B | 40 | 48 | 11 | 44 | 83 | 12/144 |
| 1/4" | 380B1/4G1R | 380B1/4G1B | 40 | 48 | 11 | 44 | 83 | 12/144 |
| 3/8" | 380C3/8G1R | 380C3/8G1B | 40 | 48 | 11 | 44 | 83 | 12/144 |
| 1/2" | 380D1/2G1R | 380D1/2G1B | 60 | 58 | 15 | 46 | 83 | 10/120 |
| 3/4" | 380E3/4G1R | 380E3/4G1B | 60 | 66 | 20 | 49,5 | 83 | 6/72 |
| 1" | 380F001G1R | 380F001G1B | 40 | 80 | 25 | 68 | 90 | 4/48 |
| 1" 1/4 | 380G11/4G1R | 380G11/4G1B | 40 | 97 | 32 | 73 | 90 | 10 |
| 1" 1/2 | 380H11/2G1R | 380H11/2G1B | 40 | 107 | 40 | 82 | 160 | 10 |
| 2" | 380I002G1R | 380I002G1B | 40 | 131 | 50 | 90 | 160 | 10 |
| 2" 1/2 | 380L21/2G1R | - | 40 | 155 | 62 | 140 | 240 | 2 |
| 3" | 380M003G1R | - | 40 | 176 | 74 | 145 | 240 | 2 |
| 4" * | 380N004G1N | - | 10 | 178 | 94 | 142 | 229 | 1 |

* Disponibile solo con leva nera. Available only with black lever.



NICHELATE
NICKEL-PLATED

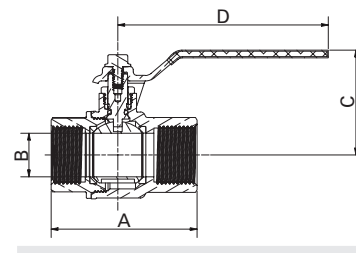




| Attacchi Connections | Codice prodotto Product code | | PN | A ±1mm | B mm | C mm | D mm | Conf. num. pezzi Pack. num. pieces |
|-------------------------|---|---|----|-----------|---------|---------|---------|---------------------------------------|
| |  |  | | | | | | |
| 1/8" | 380A1/8C1R | 380A1/8C1B | 40 | 48 | 11 | 44 | 83 | 12/144 |
| 1/4" | 380B1/4C1R | 380B1/4C1B | 40 | 48 | 11 | 44 | 83 | 12/144 |
| 3/8" | 380C3/8C1R | 380C3/8C1B | 40 | 48 | 11 | 44 | 83 | 12/144 |
| 1/2" | 380D1/2C1R | 380D1/2C1B | 60 | 58 | 15 | 46 | 83 | 10/120 |
| 3/4" | 380E3/4C1R | 380E3/4C1B | 60 | 66 | 20 | 49,5 | 83 | 6/72 |
| 1" | 380F001C1R | 380F001C1B | 40 | 80 | 25 | 68 | 90 | 4/48 |
| 1" 1/4 | 380G11/4C1R | 380G11/4C1B | 40 | 97 | 32 | 73 | 90 | 10 |
| 1" 1/2 | 380H11/2C1R | 380H11/2C1B | 40 | 107 | 40 | 82 | 160 | 10 |
| 2" | 380I002C1R | 380I002C1B | 40 | 131 | 50 | 90 | 160 | 10 |
| 2" 1/2 | 380L21/2C1R | - | 40 | 155 | 62 | 140 | 240 | 2 |
| 3" | 380M003C1R | - | 40 | 176 | 74 | 145 | 240 | 2 |



Con leva piatta in acciaio INOX AISI 304
With AISI 304 stainless steel flat lever

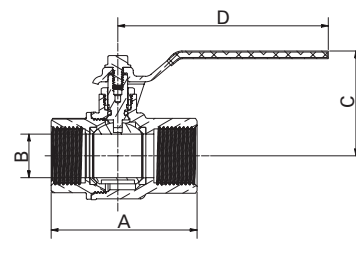
NICHELATE ESTERNAMENTE
EXTERNALLY NICKEL-PLATED





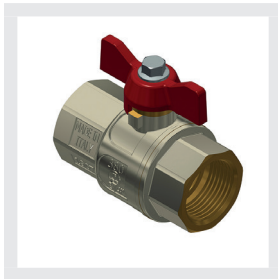
| Attacchi Connections | Codice prodotto Product code | | PN | A ±1mm | B mm | C mm | D mm | Conf. num. pezzi Pack. num. pieces |
|-------------------------|---|---|----|-----------|---------|---------|---------|---------------------------------------|
| |  |  | | | | | | |
| 1/8" | 380A1/8G4R | 380A1/8G4B | 40 | 48 | 11 | 41 | 95 | 12/144 |
| 1/4" | 380B1/4G4R | 380B1/4G4B | 40 | 48 | 11 | 41 | 95 | 12/144 |
| 3/8" | 380C3/8G4R | 380C3/8G4B | 40 | 48 | 11 | 41 | 95 | 12/144 |
| 1/2" | 380D1/2G4R | 380D1/2G4B | 60 | 58 | 15 | 43,5 | 95 | 10/120 |
| 3/4" | 380E3/4G4R | 380E3/4G4B | 60 | 66 | 20 | 47 | 95 | 6/72 |
| 1" | 380F001G4R | 380F001G4B | 40 | 80 | 25 | 60,5 | 115 | 4/48 |
| 1" 1/4 | 380G11/4G4R | 380G11/4G4B | 40 | 97 | 32 | 65,5 | 115 | 10 |
| 1" 1/2 | 380H11/2G4R | 380H11/2G4B | 40 | 107 | 40 | 77,5 | 165 | 10 |
| 2" | 380I002G4R | 380I002G4B | 40 | 131 | 50 | 85,5 | 165 | 10 |



NICHELATE
NICKEL-PLATED

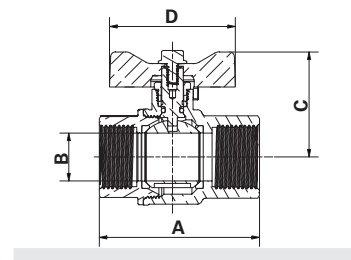



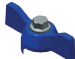
| Attacchi Connections | Codice prodotto Product code | | PN | A ±1mm | B mm | C mm | D mm | Conf. num. pezzi Pack. num. pieces |
|-------------------------|---|---|----|-----------|---------|---------|---------|---------------------------------------|
| |  |  | | | | | | |
| 1/8" | 380A1/8C4R | 380A1/8C4B | 40 | 48 | 11 | 41 | 95 | 12/144 |
| 1/4" | 380B1/4C4R | 380B1/4C4B | 40 | 48 | 11 | 41 | 95 | 12/144 |
| 3/8" | 380C3/8C4R | 380C3/8C4B | 40 | 48 | 11 | 41 | 95 | 12/144 |
| 1/2" | 380D1/2C4R | 380D1/2C4B | 60 | 58 | 15 | 43,5 | 95 | 10/120 |
| 3/4" | 380E3/4C4R | 380E3/4C4B | 60 | 66 | 20 | 47 | 95 | 6/72 |
| 1" | 380F001C4R | 380F001C4B | 40 | 80 | 25 | 60,5 | 115 | 4/48 |
| 1" 1/4 | 380G11/4C4R | 380G11/4C4B | 40 | 97 | 32 | 65,5 | 115 | 10 |
| 1" 1/2 | 380H11/2C4R | 380H11/2C4B | 40 | 107 | 40 | 77,5 | 165 | 10 |
| 2" | 380I002C4R | 380I002C4B | 40 | 131 | 50 | 85,5 | 165 | 10 |



Con farfalla in alluminio "T"
With aluminium "T" handle

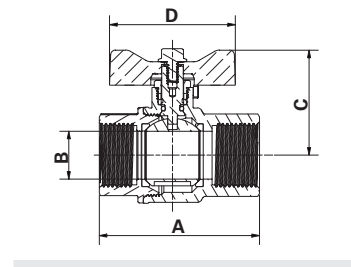
NICHELATE ESTERNAMENTE
EXTERNALLY NICKEL-PLATED


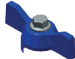


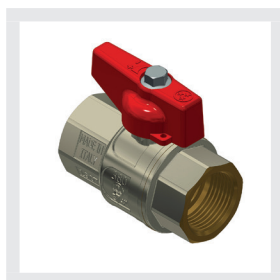
| Attacchi Connections | Codice prodotto Product code | | PN | A ±1mm | B mm | C mm | D mm | Conf. num. pezzi Pack. num. pieces |
|-------------------------|---|---|----|-----------|---------|---------|---------|---------------------------------------|
| |  |  | | | | | | |
| 1/8" | 380A1/8G6R | 380A1/8G6B | 40 | 48 | 11 | 37,5 | 52 | 12/144 |
| 1/4" | 380B1/4G6R | 380B1/4G6B | 40 | 48 | 11 | 37,5 | 52 | 12/144 |
| 3/8" | 380C3/8G6R | 380C3/8G6B | 40 | 48 | 11 | 37,5 | 52 | 12/144 |
| 1/2" | 380D1/2G6R | 380D1/2G6B | 60 | 58 | 15 | 39,6 | 52 | 10/120 |
| 3/4" | 380E3/4G6R | 380E3/4G6B | 60 | 66 | 20 | 43,4 | 52 | 8/96 |
| 1" | 380F001G6R | 380F001G6B | 40 | 80 | 25 | 51,6 | 65 | 4/48 |



NICHELATE
NICKEL-PLATED



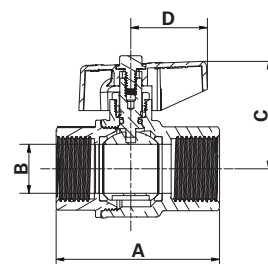
| Attacchi Connections | Codice prodotto Product code | | PN | A ±1mm | B mm | C mm | D mm | Conf. num. pezzi Pack. num. pieces |
|-------------------------|---|---|----|-----------|---------|---------|---------|---------------------------------------|
| |  |  | | | | | | |
| 1/8" | 380A1/8C6R | 380A1/8C6B | 40 | 48 | 11 | 37,5 | 52 | 12/144 |
| 1/4" | 380B1/4C6R | 380B1/4C6B | 40 | 48 | 11 | 37,5 | 52 | 12/144 |
| 3/8" | 380C3/8C6R | 380C3/8C6B | 40 | 48 | 11 | 37,5 | 52 | 12/144 |
| 1/2" | 380D1/2C6R | 380D1/2C6B | 60 | 58 | 15 | 39,6 | 52 | 10/120 |
| 3/4" | 380E3/4C6R | 380E3/4C6B | 60 | 66 | 20 | 43,4 | 52 | 8/96 |
| 1" | 380F001C6R | 380F001C6B | 40 | 80 | 25 | 51,6 | 65 | 4/48 |





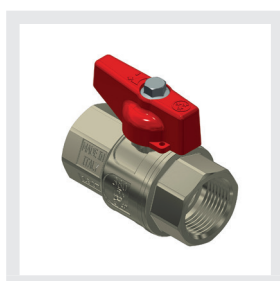
Con manopola in alluminio
With aluminium knob

NICHELATE ESTERNAMENTE
EXTERNALLY NICKEL-PLATED

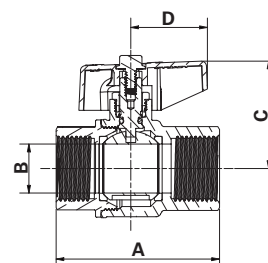
ACQUA POTABILE
DRINKING WATER





| Attacchi Connections | Codice prodotto Product code | | PN | A ±1mm | B mm | C mm | D mm | Conf. num. pezzi Pack. num. pieces |
|-------------------------|---|---|----|-----------|---------|---------|---------|---------------------------------------|
| |  |  | | | | | | |
| 1/8" | 380A1/8G2R | 380A1/8G2B | 40 | 48 | 11 | 34 | 31,5 | 12/144 |
| 1/4" | 380B1/4G2R | 380B1/4G2B | 40 | 48 | 11 | 34 | 31,5 | 12/144 |
| 3/8" | 380C3/8G2R | 380C3/8G2B | 40 | 48 | 11 | 34 | 31,5 | 12/144 |
| 1/2" | 380D1/2G2R | 380D1/2G2B | 60 | 58 | 15 | 40 | 31,5 | 10/120 |
| 3/4" | 380E3/4G2R | 380E3/4G2B | 60 | 66 | 20 | 43,5 | 31,5 | 6/72 |
| 1" | 380F001G2R | 380F001G2B | 40 | 80 | 25 | 54 | 42,5 | 4/48 |
| 1" 1/4 | 380G11/4G2R | 380G11/4G2B | 40 | 97 | 32 | 68 | 50 | 10 |



NICHELATE
NICKEL-PLATED



| Attacchi Connections | Codice prodotto Product code | | PN | A ±1mm | B mm | C mm | D mm | Conf. num. pezzi Pack. num. pieces |
|-------------------------|---|---|----|-----------|---------|---------|---------|---------------------------------------|
| |  |  | | | | | | |
| 1/8" | 380A1/8C2R | 380A1/8C2B | 40 | 48 | 11 | 34 | 31,5 | 12/144 |
| 1/4" | 380B1/4C2R | 380B1/4C2B | 40 | 48 | 9 | 34 | 31,5 | 12/144 |
| 3/8" | 380C3/8C2R | 380C3/8C2B | 40 | 48 | 11 | 34 | 31,5 | 12/144 |
| 1/2" | 380D1/2C2R | 380D1/2C2B | 60 | 58 | 15 | 40 | 31,5 | 10/120 |
| 3/4" | 380E3/4C2R | 380E3/4C2B | 60 | 66 | 20 | 43,5 | 31,5 | 6/72 |
| 1" | 380F001C2R | 380F001C2B | 40 | 80 | 25 | 54 | 42,5 | 4/48 |
| 1" 1/4 | 380G11/4C2R | 380G11/4C2B | 40 | 97 | 32 | 68 | 50 | 10 |



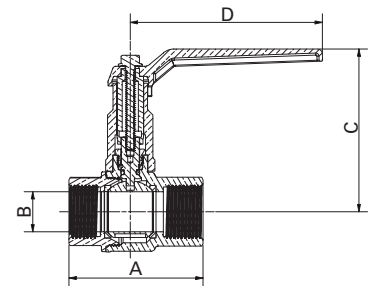
Con prolunga e leva in alluminio With extension stem and aluminium lever



NICHELATE ESTERNAMENTE EXTERNALLY NICKEL-PLATED

Per versioni 1/2" e 3/4" canotto prolunga in plastica PA6 caricata 50% fibra di vetro, per versioni da 1" a 2" in CW617N UNI EN 12165 nichelato

For 1/2" and 3/4" versions extension made of plastic sleeve PA6 loaded 50% glass fibre, for 1" to 2" versions of nickel-plated CW617N UNI EN 12165

ACQUA POTABILE
DRINKING WATER



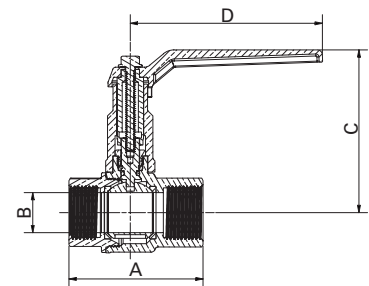
| Attacchi Connections | Codice prodotto Product code | | PN | A ±1mm | B mm | C mm | D mm | Conf. num. pezzi Pack. num. pieces |
|-------------------------|---|---|----|-----------|---------|---------|---------|---------------------------------------|
| |  |  | | | | | | |
| 1/2" | 380D1/2G5RFM | 380D1/2G5BFM | 60 | 58 | 15 | 77 | 95 | 10/120 |
| 3/4" | 380E3/4G5RF | 380E3/4G5BF | 60 | 66 | 20 | 80,5 | 95 | 6/72 |
| 1" | 380F001G5RF | 380F001G5BF | 40 | 80 | 25 | 99,5 | 115 | 4/48 |
| 1" 1/4 | 380G11/4G5RF | 380G11/4G5BF | 40 | 97 | 32 | 104,5 | 115 | 10 |
| 1" 1/2 | 380H11/2G5RF | 380H11/2G5BF | 40 | 107 | 40 | 132 | 165 | 10 |
| 2" | 380I002G5RF | 380I002G5BF | 40 | 131 | 50 | 140 | 165 | 10 |





NICHELATE NICKEL-PLATED

Per versioni 1/2" e 3/4" canotto prolunga in plastica PA6 caricata 50% fibra di vetro, per versioni da 1" a 2" in CW617N UNI EN 12165 nichelato

For 1/2" and 3/4" versions extension made of plastic sleeve PA6 loaded 50% glass fibre, for 1" to 2" versions of nickel-plated CW617N UNI EN 12165



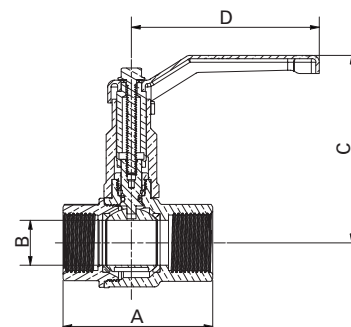
| Attacchi Connections | Codice prodotto Product code | | PN | A ±1mm | B mm | C mm | D mm | Conf. num. pezzi Pack. num. pieces |
|-------------------------|---|---|----|-----------|---------|---------|---------|---------------------------------------|
| |  |  | | | | | | |
| 1/2" | 380D1/2C5RFM | 380D1/2C5BFM | 60 | 58 | 15 | 77 | 95 | 10/120 |
| 3/4" | 380E3/4C5RF | 380E3/4C5BF | 60 | 66 | 20 | 80,5 | 95 | 6/72 |
| 1" | 380F001C5RF | 380F001C5BF | 40 | 80 | 25 | 99,5 | 115 | 4/48 |
| 1" 1/4 | 380G11/4C5RF | 380G11/4C5BF | 40 | 97 | 32 | 104,5 | 115 | 10 |
| 1" 1/2 | 380H11/2C5RF | 380H11/2C5BF | 40 | 107 | 40 | 132 | 165 | 10 |
| 2" | 380I002C5RF | 380I002C5BF | 40 | 131 | 50 | 140 | 165 | 10 |





Con prolunga e leva in acciaio imbutita
With extension stem and drawn steel lever

NICHELATE ESTERNAMENTE
EXTERNALLY NICKEL-PLATED

Per versioni 1/2" e 3/4" canotto prolunga in plastica PA6 caricata 50% fibra di vetro, per versioni da 1" a 2" in CW617N UNI EN 12165 nichelato
 For 1/2" and 3/4" versions extension made of plastic sleeve PA6 loaded 50% glass fibre, for 1" to 2" versions of nickel-plated CW617N UNI EN 12165

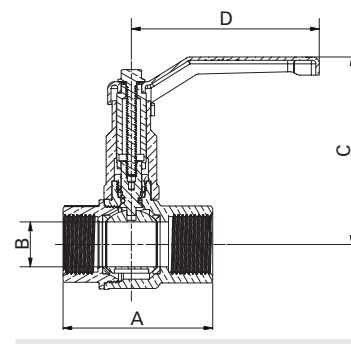




| Attacchi Connections | Codice prodotto Product code | | PN | A ±1mm | B mm | C mm | D mm | Conf. num. pezzi Pack. num. pieces |
|-------------------------|---|---|----|-----------|---------|---------|---------|---------------------------------------|
| |  |  | | | | | | |
| 1/2" | 380D1/2G1RFM | 380D1/2G1BFM | 60 | 58 | 15 | 79,5 | 83 | 30 |
| 3/4" | 380E3/4G1RF | 380E3/4G1BF | 60 | 66 | 20 | 83 | 83 | 25 |
| 1" | 380F001G1RF | 380F001G1BF | 40 | 80 | 25 | 105 | 90 | 25 |
| 1" 1/4 | 380G11/4G1RF | 380G11/4G1BF | 40 | 97 | 32 | 110 | 90 | 20 |
| 1" 1/2 | 380H11/2G1RF | 380H11/2G1BF | 40 | 107 | 40 | 134 | 160 | 10 |
| 2" | 380I002G1RF | 380I002G1BF | 40 | 131 | 50 | 142 | 160 | 10 |



NICHELATE
NICKEL-PLATED

Per versioni 1/2" e 3/4" canotto prolunga in plastica PA6 caricata 50% fibra di vetro, per versioni da 1" a 2" in CW617N UNI EN 12165 nichelato
 For 1/2" and 3/4" versions extension made of plastic sleeve PA6 loaded 50% glass fibre, for 1" to 2" versions of nickel-plated CW617N UNI EN 12165



| Attacchi Connections | Codice prodotto Product code | | PN | A ±1mm | B mm | C mm | D mm | Conf. num. pezzi Pack. num. pieces |
|-------------------------|---|---|----|-----------|---------|---------|---------|---------------------------------------|
| |  |  | | | | | | |
| 1/2" | 380D1/2C1RFM | 380D1/2C1BFM | 60 | 58 | 15 | 79,5 | 83 | 30 |
| 3/4" | 380E3/4C1RF | 380E3/4C1BF | 60 | 66 | 20 | 83 | 83 | 25 |
| 1" | 380F001C1RF | 380F001C1BF | 40 | 80 | 25 | 105 | 90 | 25 |
| 1" 1/4 | 380G11/4C1RF | 380G11/4C1BF | 40 | 97 | 32 | 110 | 90 | 20 |
| 1" 1/2 | 380H11/2C1RF | 380H11/2C1BF | 40 | 107 | 40 | 134 | 160 | 10 |
| 2" | 380I002C1RF | 380I002C1BF | 40 | 131 | 50 | 142 | 160 | 10 |

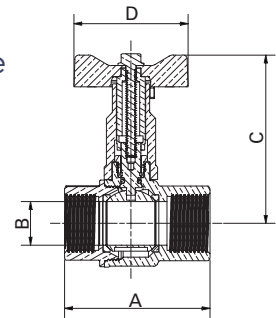



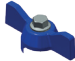
Con prolunga e farfalla in alluminio "T" With extension stem and aluminium "T" handle

NICHELATE ESTERNAMENTE EXTERNALLY NICKEL-PLATED

Per versioni 1/2" e 3/4" canotto prolunga in plastica PA6 caricata 50% fibra di vetro, per versioni da 1" a 1" in CW617N UNI EN 12165 nichelato
For 1/2" and 3/4" versions extension made of plastic sleeve PA6 loaded 50% glass fibre, for 1" version of nickel-plated CW617N UNI EN 12165

ACQUA POTABILE
DRINKING WATER

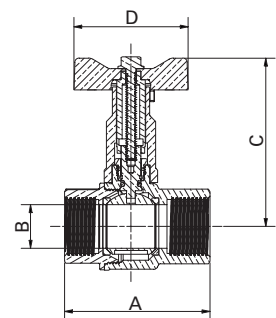



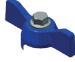
| Attacchi Connections | Codice prodotto Product code | | PN | A ±1mm | B mm | C mm | D mm | Conf. num. pezzi Pack. num. pieces |
|-------------------------|---|---|----|-----------|---------|---------|---------|---------------------------------------|
| |  |  | | | | | | |
| 1/2" | 380D1/2G6RFM | 380D1/2G6BFM | 60 | 58 | 15 | 73 | 52 | 40 |
| 3/4" | 380E3/4G6RF | 380E3/4G6BF | 60 | 66 | 20 | 77 | 52 | 30 |
| 1" | 380F001G6RF | 380F001G6BF | 40 | 80 | 25 | 88,5 | 65 | 30 |



NICHELATE NICKEL-PLATED

Per versioni 1/2" e 3/4" canotto prolunga in plastica PA6 caricata 50% fibra di vetro, per versioni da 1" a 1" in CW617N UNI EN 12165 nichelato
For 1/2" and 3/4" versions extension made of plastic sleeve PA6 loaded 50% glass fibre, for 1" version of nickel-plated CW617N UNI EN 12165



| Attacchi Connections | Codice prodotto Product code | | PN | A ±1mm | B mm | C mm | D mm | Conf. num. pezzi Pack. num. pieces |
|-------------------------|---|---|----|-----------|---------|---------|---------|---------------------------------------|
| |  |  | | | | | | |
| 1/2" | 380D1/2C6RFM | 380D1/2C6BFM | 60 | 58 | 15 | 73 | 52 | 40 |
| 3/4" | 380E3/4C6RF | 380E3/4C6BF | 60 | 66 | 20 | 77 | 52 | 30 |
| 1" | 380F001C6RF | 380F001C6BF | 40 | 80 | 25 | 88,5 | 65 | 30 |



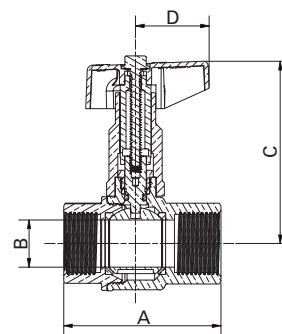
Con prolunga e manopola in alluminio
With extension stem and aluminium knob



NICHELATE ESTERNAMENTE
EXTERNALLY NICKEL-PLATED

Per versioni 1/2" e 3/4" canotto prolunga in plastica PA6 caricata 50% fibra di vetro, per versioni da 1" a 1" 1/4 in CW617N UNI EN 12165 nichelato

For 1/2" and 3/4" versions extension made of plastic sleeve PA6 loaded 50% glass fibre, for 1" to 1" 1/4 versions of nickel-plated CW617N UNI EN 12165

ACQUA POTABILE
DRINKING WATER



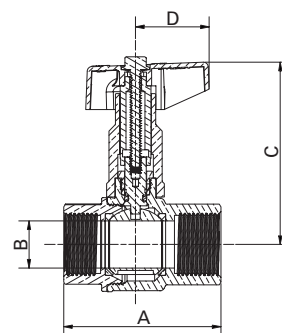
| Attacchi Connections | Codice prodotto Product code | | PN | A ±1mm | B mm | C mm | D mm | Conf. num. pezzi Pack. num. pieces |
|-------------------------|---|---|----|-----------|---------|---------|---------|---------------------------------------|
| |  |  | | | | | | |
| 1/2" | 380D1/2G2RFM | 380D1/2G2BFM | 60 | 58 | 15 | 73 | 31,5 | 40 |
| 3/4" | 380E3/4G2RF | 380E3/4G2BF | 60 | 66 | 20 | 77 | 31,5 | 30 |
| 1" | 380F001G2RF | 380F001G2BF | 40 | 80 | 25 | 91 | 42,5 | 30 |
| 1" 1/4" | 380G11/4G2RF | 380G11/4G2BF | 40 | 97 | 32 | 105 | 50 | 20 |





NICHELATE
NICKEL-PLATED

Per versioni 1/2" e 3/4" canotto prolunga in plastica PA6 caricata 50% fibra di vetro, per versioni da 1" a 1" 1/4 in CW617N UNI EN 12165 nichelato

For 1/2" and 3/4" versions extension made of plastic sleeve PA6 loaded 50% glass fibre, for 1" to 1" 1/4 versions of nickel-plated CW617N UNI EN 12165



| Attacchi Connections | Codice prodotto Product code | | PN | A ±1mm | B mm | C mm | D mm | Conf. num. pezzi Pack. num. pieces |
|-------------------------|---|---|----|-----------|---------|---------|---------|---------------------------------------|
| |  |  | | | | | | |
| 1/2" | 380D1/2C2RFM | 380D1/2C2BFM | 60 | 58 | 15 | 73 | 31,5 | 40 |
| 3/4" | 380E3/4C2RF | 380E3/4C2BF | 60 | 66 | 20 | 77 | 31,5 | 30 |
| 1" | 380F001C2RF | 380F001C2BF | 40 | 80 | 25 | 91 | 42,5 | 30 |
| 1" 1/4" | 380G11/4C2RF | 380G11/4C2BF | 40 | 97 | 32 | 105 | 50 | 20 |